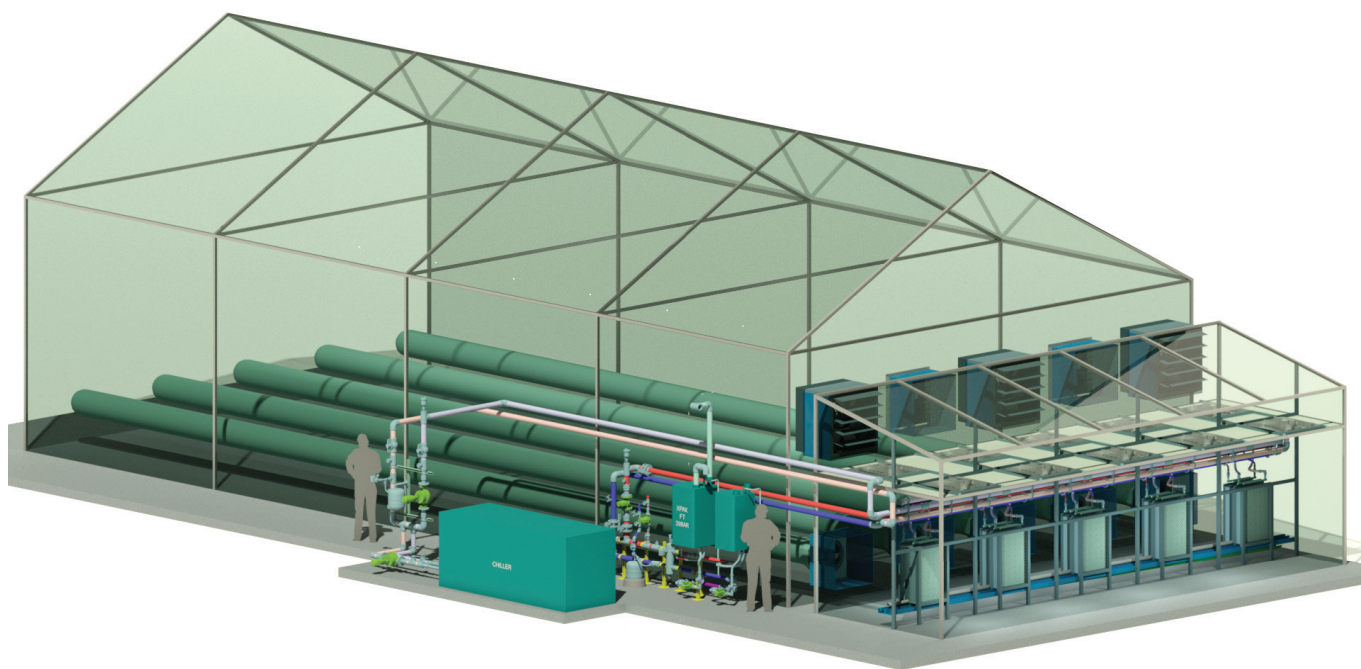


# PLANTCENTRIC CONTROLLED ENVIRONMENT ARCADE

A modular gallery for complete optimization of your environment for peak plant production.



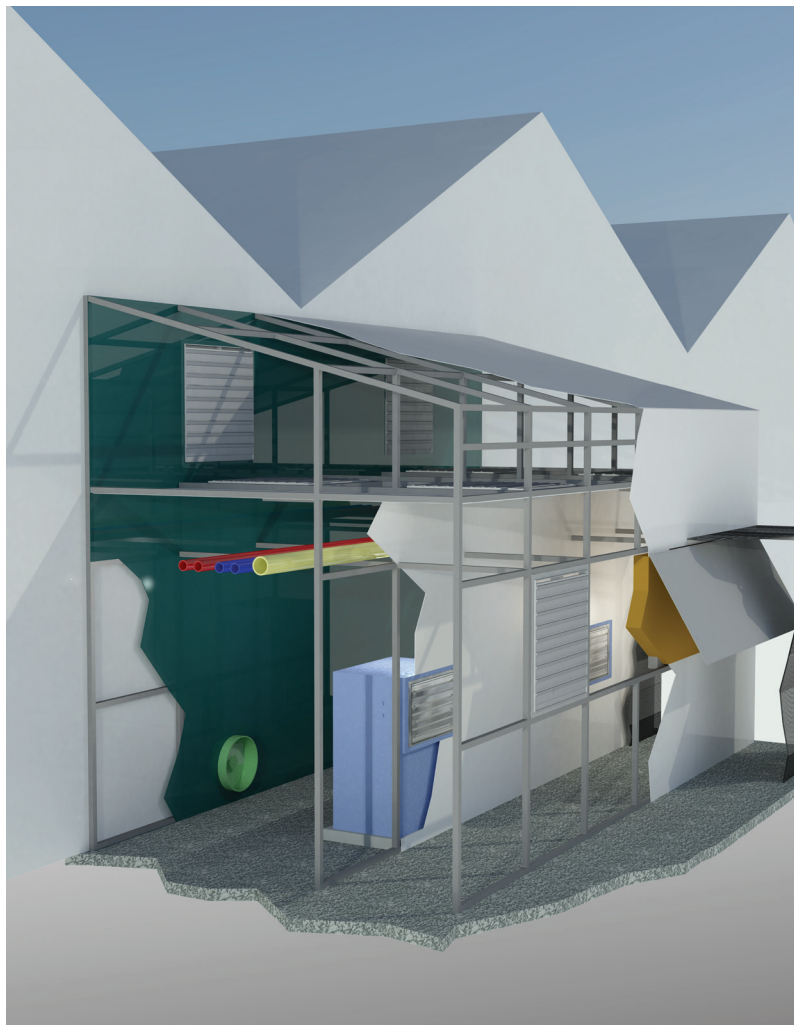
We believe greenhouses are for growing, not to be used as equipment rooms.

This controlled environment arcade attaches separately to your greenhouse to allow for complete climate control.

**Plantcentric® Controlled Environment Arcade** is a complete engineered modular solution for your greenhouse climate needs to provide the optimal growing conditions for indoor plant propagation. Ideal environmental setpoints are used to design the appropriate equipment required to maintain these values.

## Typical modes of operation include:

- 100% recirculation
- Heating
- Cooling
- Dehumidification
- Fresh air blending
- Air ventilation
- Adiabatic cooling
- Fresh air cooling
- Pest and pollination prevention
- Positive pressure
- Co2 conservation
- Uniform, stress-free environment



*Plantcentric Controlled Environment Arcade (PCEA) attaches to your structure-- new build or retrofit.*

## GROWER TESTIMONIAL

"The Plantcentric® is the total package for greenhouse control. Most companies throw around the word "controlled environment agriculture" but they only really work when conditions outside are favorable. They also only offer 1 or 2 options. The Plantcentric® gives you every option possible. Plus the fact that it can be added to any greenhouse structure makes it an option for any greenhouse operator anywhere..."

*-Eric Brandstad, Greenhouse Advisory Group*

## GROWER BENEFITS

1. **Optimized area of grow space**, otherwise taken up by mechanical equipment
2. Creates a **uniform, stress-free environment** for the plants
3. **Modular and expandable**  
Can be retrofitted to existing structure or included in a new build.
4. Achieve a **better greenhouse climate**. You have optimal control of the climate conditions.
5. **Higher production levels. Faster ROI**  
By giving the plants their ideal cultivation climate, you can optimize photosynthesis.
6. **CO2 is conserved** when the greenhouse is in closed and semi-closed mode.
7. **Food safety**  
With an optional insect screen, the PCEA can repel insects, meaning less disease and cross-pollination risks for maximum plant and food safety  
By moving climate equipment into the arcade, all maintenance can be done within the arcade and not in the growing space. This prevents any possible contamination and effective pest management by keeping people out of the grow space.
8. **Reduced water consumption**  
Reduce water consumption by using water efficiently in your mechanical systems. By re-using irrigation water and collecting condensation, growers can save \$\$ on water usage.
9. **Fuel Savings**  
Growers save fuel as a result of the active dehumidification not requiring heating and venting.
10. **Integrates into all major environmental control computer systems**
11. **No shade creation** from equipment inside the space.